



City of
Pasco

Arts & Culture Commission

P.O. Box 293 • 525 N. Third Ave. • Pasco, WA 99301

CALL FOR ARTISTS

April 11, 2022

Public Art Opportunity: Noburo “Peanuts” Fukuda Public Art Installation for Pasco, Washington

Pasco Arts and Culture Commission (PACC) Goal/Objectives:

To utilize art to enhance community identity and to improve community connectivity and cohesion through greater understanding and appreciation of what makes Pasco unique. PACC objectives are to explore, enhance, facilitate, and promote City of Pasco’s arts-related activities.

Project:

The City of Pasco, Washington (City) and the Pasco Arts & Culture Commission is requesting proposals from experienced artist(s) to create a physical depiction of Noburo “Peanuts” Fukuda to be displayed in Peanuts Park. The selected artist or artist team will be responsible for the design, fabrication, shipment to the site, and must collaborate with City staff on installation.

Deadline: All submittals are to be delivered no later than 5:00PM, **Tuesday, October 11, 2022.**

Location: Peanuts Park, 109 S 4th Ave, Pasco, Washington

Budget:

Selected artist(s) will be awarded up to \$50,000.

The selected artist or artist team will be responsible for the design, fabrication, shipment to the site, and must collaborate with City staff on installation. The available budget must cover all artists’ expenses and compensation including, artist fees, taxes, insurance, materials, tools, travel, expense contingency, and other associated costs. Installation, up-lighting costs, and permit fees will be covered by the City.

Eligible Artists:

Artists or teams over the age of 18 residing may apply. Submitted designs must be original works of the artist and in compliance with all existing copyright laws.

SUBMISSION PROCESS

Interested Artists or teams are required to submit one digital (electronic) copy of their proposal. Failure to provide the proposal in the appropriate manner will result in disqualification. Hard-copy or fax proposals are not permitted and will not be accepted. One electronic copy, including attachments, shall be transmitted to the City Clerk’s Office and be no larger than 20mb in size. Receipt time of submittal will be considered the timestamp of the incoming email created automatically by the City’s email server. Artists and teams are encouraged to submit their proposal with adequate time for the email to be processed by the City’s email server.

- Email submissions to: cityclerk@pasco-wa.gov
- Subject line: CALL FOR ARTISTS, Noburo “Peanuts” Fukuda Public Art Installation
- Artists may direct questions or requests by contacting PACC staff liaison Angela Pashon (pashona@pasco-wa.gov or 509-537-5136).

Incomplete or late submissions will not be considered.

Background: Noburo “Peanuts” Fukuda was a retired railroad worker of Japanese descent. He was community minded, and spent his retirement keeping the streets of his city clean. Peanuts is probably best remembered for giving peanuts, or full-sized candy bars to the children of Pasco; a multitude of generations remember him for this reason. He was seen all over Pasco, with his tricycle, helping improve the community. The artist or team is encouraged to keep these attributes in mind when designing the project.

Design Requirements:

- Weight requirements for piece may not exceed 2,100 lbs.
- Height requirement but no taller than 6 feet.
- To ensure a 20’ walking area between the piece and the seat wells, the diameter should be less than 6 feet.
- Height requirements for singular sculpture should be representative of Peanuts but may not exceed 6’ centered in the identified space
- Illumination of light-based sculptures must not intrude on neighboring residences or businesses
- The artwork must not create a disorienting situation or cause a distraction for drivers. (i.e. highly reflective material discouraged).
- The artwork must improve and not detract from the safety of the site.
- The artwork should be designed “in the round” and be equally intriguing from all angles.
- The artwork should be scaled to the attention of visitors.
- Interactive artwork encouraged and sculptures may create a desire for pedestrian activity (i.e. selfies).
- The artwork must be fabricated in durable, permanent, outdoor media that is safe, easily maintained, and proven its viability in public installations.
- The artwork must be able to withstand harsh weather conditions of the desert, which include intense sun, summer temperatures above 110* Fahrenheit, and high winds. The City of Pasco will conduct regular maintenance on public art, but prospective applicants are advised to research colors and materials for durability.
- The artwork must be constructed to reasonably discourage or deter theft and vandalism.
- The artwork must be suitable for public viewing by all ages.

The Artist(s) must also:

- Fabricate the design of the installation
- Shipment of the installation to the site
- Collaborate with City staff on installation
- Provide maintenance guidelines for long-term preservation.

Proposal: Submit **electronic copy** of the following:

- Cover letter (1 page) including Artist biography (up to 250 words), brief statement of your interest in the project, collaborative skills, relevant experience, and technical ability; and
- A written narrative of up to 300 words of the proposed artwork theme, style, use of space and general practice/ approach to sculpting the art piece, for example alone or with a team; and
- No more than 4 different preliminary conceptual designs. Submit conceptual design drawing for each proposal that meets criteria above and examples of the flexibility of each design (if any

beyond size and color) for adaptation in future installations. Each proposal should be clearly marked including title. The identification list for digital images should be a PDF, and must include the artist/contractor's name, number corresponding to the appropriate photo image and title of work; and

- Current resume(s) of the artist and any other team members including residence (2 page max.); and
- Minimum of 2 but up to 6 relevant projects reflecting your past work. Each submission is to include images of installed work, brief description including title, materials used, dimensions, date, location, and budget.

Do not submit original copies of artwork, books, or other materials, as they will not be considered.

No images of the proposed sculptural design are needed at this point in the submission. Each artist can only submit one individual proposal document; however, each artist can be part of up to two artists teams.

Selection Criteria: Submissions may be evaluated on, but not limited to, the following:

- Originality
- Aesthetics
- Suitability
- Understanding of project
- Technical ability
- Experience

Selection:

- The Pasco Arts and Culture Commission will select up to three finalists for the project.
- All finalists will be required to develop additional presentation materials and a digitally rendered concept or maquette no higher than two feet. Oral presentations may be scheduled in person or via video conference call.
- The City will reimburse finalist artists for actual costs associated with creation of the maquette or digitally rendered concept, up to \$250. Receipts must be provided for reimbursement.
- Proposed artwork is appropriate to the site in size and materials. Proposed artwork meets all requirements of this Call for Art.
- Safety of proposed artwork is approved by the City.
- The Pasco Arts and Culture Commission will make a final recommendation to the Pasco City Council.
- The selected artist(s) must execute the City's Personal Services Agreement (copy available upon request).

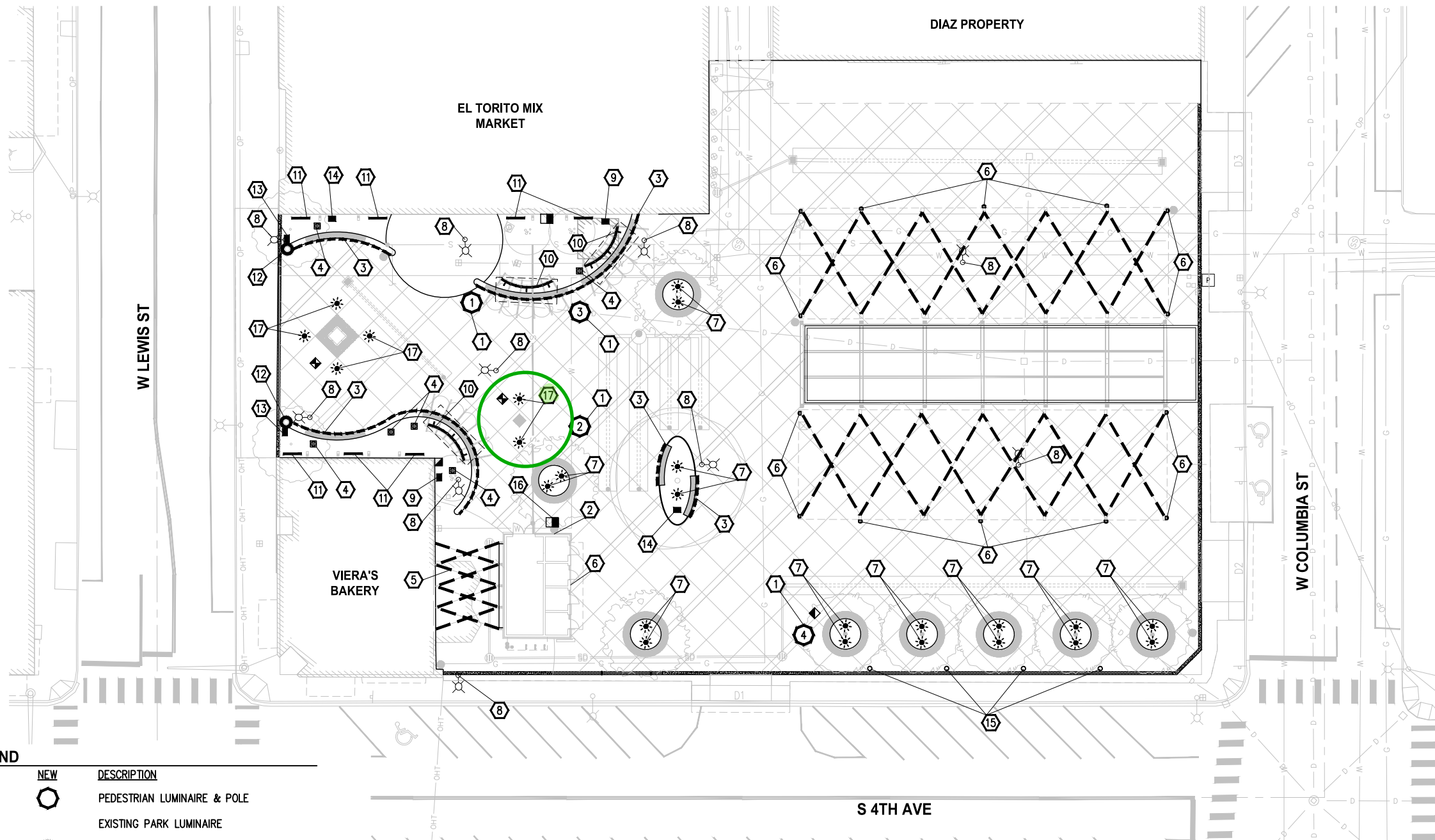
Attachments:

- Noburo "Peanuts" Fukuda photos
- Site elements plans





K:\PROJECTS\PASCO\17138 - Peanuts Park Final Design\DESIGN\Drawings\Contract\17138ILL01.dwg 5/6/2020 8:29 AM



LEGEND

EXISTING	NEW	DESCRIPTION
		PEDESTRIAN LUMINAIRE & POLE
		EXISTING PARK LUMINAIRE
		LED ENTRY LIGHT PANEL
		ILLUMINATED BOLLARD
		LINEAR UNDERLIGHTING
		CATENARY LIGHTING
		GARDEN RECEPTACLE
		EXTERIOR PAVILION LIGHT
		ACCENT TREE/ART SCULPTURE & STATUE UPLIGHTING
		JUNCTION BOX TYPE 1, 2, 8
		IN-GROUND ELECTRICAL ENCLOSURE
		CONDUIT
		WIRE NOTE
		CONSTRUCTION NOTE

LUMINAIRE SCHEDULE (ELECTRICAL SERVICE CABINET "L1", FOR PANEL SCHEDULE AND LOCATION, SEE ELECTRICAL SHEET 81)

LUMINAIRE #	NORTHING	EASTING	LUMINAIRE TYPE	MOUNTING HEIGHT	BASE	CIRCUIT #	COMMENTS
1	330303.0980	1996846.7491	40W, 350mA, B1-U0-G1, 240V	*	FIXED	8	*SEE DETAILS, SHEET 31
2	330256.3192	1996820.7398	40W, 350mA, B1-U0-G1, 240V	*	FIXED	8	*SEE DETAILS, SHEET 31
3	330268.9294	1996855.8045	40W, 350mA, B1-U0-G1, 240V	*	FIXED	8	*SEE DETAILS, SHEET 31
4	330164.7094	1996781.5012	40W, 350mA, B1-U0-G1, 240V	*	FIXED	8	*SEE DETAILS, SHEET 31

GENERAL NOTES

FOR GENERAL NOTES SEE ILLUMINATION SHEET, 30

CONSTRUCTION NOTES

- 1 CONSTRUCT PEDESTRIAN LUMINAIRE POLE FOUNDATION, FURNISH AND INSTALL PEDESTRIAN LUMINAIRE POLE, FIXTURE AND ALL ASSOCIATED EQUIPMENT PER ILLUMINATION DETAILS SHEET 31 AND PER LUMINAIRE SCHEDULE, THIS SHEET. FOR CIRCUITS AND WIRING, SEE WIRE NOTES, SHEET 30. FOR PANEL SCHEDULE, SEE ELECTRICAL PLANS, SHEETS GE1.00 - E3.02. SEE SPECIAL PROVISIONS.
- 2 PROPOSED LOCATION BUILDING ENTRANCE FOR ILLUMINATION CIRCUITS. FOR ELECTRICAL PLANS AND PANEL SCHEDULE, SEE SHEETS GE1.00 - E3.02.
- 3 FURNISH AND INSTALL LINEAR UNDERLIGHTING FIXTURES. MAX RUN LENGTH SHALL BE 53'. INSTALL WATERPROOF FITTINGS FOR ALL EXPOSED CONDUITS. FOR LINEAR UNDERLIGHTING FIXTURE MOUNTING DETAILS, SEE SITE ELEMENT PLANS, SHEETS 5-16. FOR PANEL SCHEDULE SEE ELECTRICAL PLANS, SHEET GE1.05. SEE SPECIAL PROVISIONS.
- 4 FURNISH AND INSTALL GARDEN RECEPTACLE PER ILLUMINATION DETAILS, SHEET 31. VERIFY LOCATION WITH THE ENGINEER PRIOR TO INSTALLATION. FOR CIRCUITS AND WIRING, SEE WIRE NOTES, SHEET 30. FOR PANEL SCHEDULE SEE ELECTRICAL PLANS, SHEET GE1.05.
- 5 FOR CATENARY LIGHTING SYSTEM, SEE ARCHITECTURAL PLANS, SHEETS 32-39.
- 6 FOR CATENARY AND EXTERIOR LIGHTING AT PAVILION BUILDING, SEE ARCHITECTURAL PLANS, SHEETS 32-48 AND ELECTRICAL PLANS GE1.00 -GE3.02.
- 7 FURNISH AND INSTALL ACCENT TREE UPLIGHTING FIXTURE PER DETAIL, SHEET 31. DETERMINE THE EXACT LOCATION WITH THE ENGINEER IN THE FIELD PRIOR TO EXCAVATION. FOR CIRCUITS AND WIRING SEE WIRE NOTES, SHEET 30. SEE SPECIAL PROVISIONS.
- 8 REMOVE EXISTING PARK LUMINAIRE, POLE, ASSOCIATED EQUIPMENT, AND UNUSED WIRING TO POWER SOURCE. REMOVE EXISTING FOUNDATION AT LEAST 3 FEET BELOW FINISHED GRADE.
- 9 FURNISH AND INSTALL IN-GROUND ELECTRICAL ENCLOSURE WITH TWO LUMINAIRE DRIVERS EACH WITH TWO 100W TAPS FOR LINEAR UNDERLIGHTING FIXTURES. EACH 100W TAP SHALL BE CAPABLE OF SUPPORTING A MAXIMUM OF 53' OF LINEAR UNDERLIGHTING FIXTURES. ALL CONDUIT SHALL BE INSTALLED USING WATERTIGHT CONNECTIONS, AND SHALL BE PROVIDED BY THE CONTRACTOR. FOR CIRCUITS AND WIRING, SEE WIRE NOTES SHEET 30. SEE SPECIAL PROVISIONS.
- 10 FURNISH AND INSTALL ACCENT LIGHTING FOR SHADE STRUCTURE PER SITE ELEMENTS AND DETAILS, SHEETS 5 & 14. FOR CIRCUITS WIRING, SEE WIRE NOTES, SHEET 30. FOR PANEL SCHEDULE, SEE ELECTRICAL PLANS, SHEET GE1.05. SEE SPECIAL PROVISIONS.
- 11 FURNISH AND INSTALL ACCENT LIGHTING FOR DECORATIVE WALL SCREEN PER SITE ELEMENTS AND DETAILS, SHEETS 5 & 16. FOR CIRCUITS AND WIRING, SEE WIRE NOTES, SHEET 30. FOR PANEL SCHEDULE, SEE ELECTRICAL PLANS, SHEET GE1.05. SEE SPECIAL PROVISIONS.
- 12 FURNISH AND INSTALL LED LIGHT STRIPS IN ENTRY COLUMN PER SITE ELEMENTS AND DETAILS, SHEET 15. FOR CIRCUITS AND WIRING, SEE WIRE NOTES, SHEET 30. FOR PANEL SCHEDULE, SEE ELECTRICAL PLANS, SHEET GE1.05. SEE SPECIAL PROVISIONS.
- 13 FURNISH AND INSTALL IN-GROUND ELECTRICAL ENCLOSURE WITH ONE LUMINAIRE DRIVER WITH TWO 100W TAPS FOR ENTRY COLUMNS. ALL CONDUIT SHALL BE INSTALLED USING WATERTIGHT CONNECTIONS, AND SHALL BE PROVIDED BY THE CONTRACTOR. FOR CIRCUITS AND WIRING, SEE WIRE NOTES SHEET 30. FOR PANEL SCHEDULE, SEE ELECTRICAL PLANS, SHEET GE1.05. SEE SPECIAL PROVISIONS.
- 14 FURNISH AND INSTALL IN-GROUND ELECTRICAL ENCLOSURE WITH ONE LUMINAIRE DRIVER WITH TWO 100W TAPS FOR LINEAR UNDERLIGHTING FIXTURES. EACH 100W TAP SHALL BE CAPABLE OF SUPPORTING A MAXIMUM OF 53' OF LINEAR UNDERLIGHTING FIXTURES. ALL CONDUIT SHALL BE INSTALLED USING WATERTIGHT CONNECTIONS, AND SHALL BE PROVIDED BY THE CONTRACTOR. FOR CIRCUITS AND WIRING, SEE WIRE NOTES SHEET 30. FOR PANEL SCHEDULE, SEE ELECTRICAL SHEET GE1.05. SEE SPECIAL PROVISIONS.
- 15 ILLUMINATED/ELECTRICAL POWER BOLLARD, FOR DETAILS SEE SITE ELEMENTS SHEETS 5-16. FOR CIRCUITS AND ILLUMINATION WIRING, SEE WIRE NOTES, SHEET 30. FOR NON ILLUMINATION WIRING AND PANEL SCHEDULE, SEE ELECTRICAL SHEET GE1.02 AND GE1.05.
- 16 ALL WIRING AND CONDUIT TO BE INSTALLED FOR PEDESTRIAN LUMINAIRES, GARDEN RECEPTACLES, ENTRY COLUMN VAULTS, TREE UPLIGHTS, WALL SCREENS, SHADE STRUCTURES, ART SCULPTURE UPLIGHTS, STATUE UPLIGHTS, ILLUMINATED BOLLARDS, AND UNDER BENCH VAULTS SHALL ENTER JUNCTION BOX BEFORE ENTERING RESTROOM BUILDING.
- 17 FURNISH AND INSTALL ART SCULPTURE & STATUE UPLIGHTING FIXTURE PER DETAIL, SHEET 31. DETERMINE THE EXACT LOCATION WITH THE ENGINEER IN THE FIELD PRIOR TO EXCAVATION. FOR CIRCUITS AND WIRING SEE WIRE NOTES, SHEET 30. FOR PANEL SCHEDULE SEE ELECTRICAL PLANS, SHEET GE1.05. SEE SPECIAL PROVISIONS.

G9.01

NO.	DATE	BY	APPR.	REVISIONS

Approved By		17138ILL01.dwg
ENGINEERING MANAGER	DATE	FILENAME
PROJECT MANAGER	DATE	DESIGNED BY
PROJECT ENGINEER	DATE	DRAWN BY
		JC
		CHECKED BY

4/2020
4/2020
4/2020
4/2020



BID
DOCUMENT

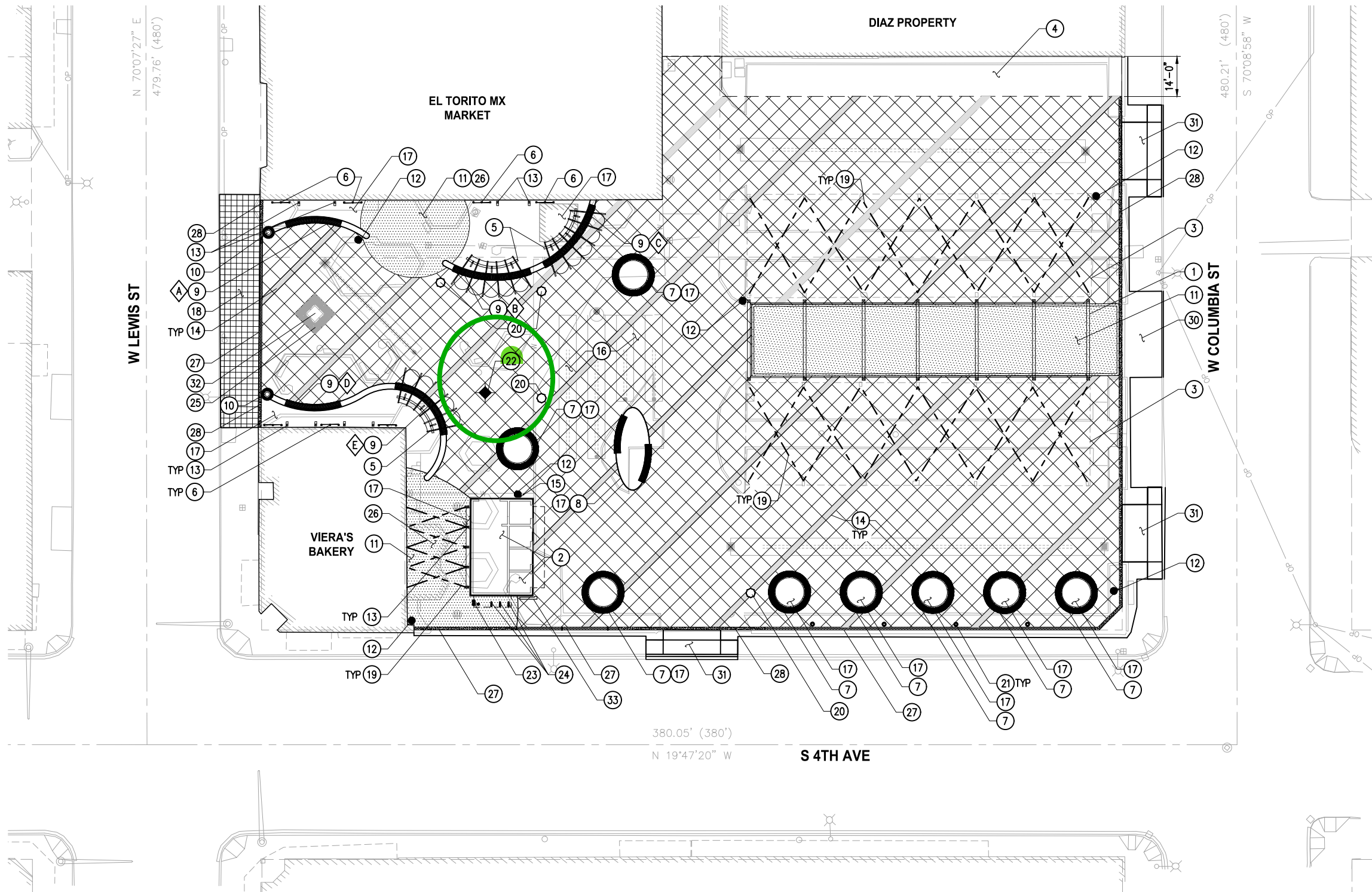


CITY OF PASCO
PEANUTS PARK RESTORATION

ILLUMINATION PLAN

KPG PROJECT No. 17138 SHT 29 OF 86

K:\PROJECTS\PASCO\17138 - Peanuts Park Final Design\Drawings\Contract\17138SITE01.dwg 5/6/2020 8:13 AM



CONSTRUCTION NOTES

- 1 PAVILION BUILDING. SEE ARCHITECTURAL SHEETS 40-48 AND STRUCTURAL SHEETS.
- 2 RESTROOM BUILDING. SEE ARCHITECTURAL SHEETS 32-39 AND STRUCTURAL SHEETS.
- 3 EXISTING CANOPIES TO BE RETAINED & REHABILITATED, SEE ARCHITECTURAL SHEETS 40-48.
- 4 BUILDING EXPANSION AREA, BY PROPERTY OTHERS.
- 5 SHADE STRUCTURE. SEE DETAIL, SHEET 14, ILLUMINATION, STRUCTURAL AND ELECTRICAL SHEETS.
- 6 DECORATIVE SCREEN. SEE DETAIL, SHEET 16, ILLUMINATION, STRUCTURAL AND ELECTRICAL SHEETS.
- 7 CIRCULAR SOLID SKIRT BENCH. SEE DETAILS, SHEET 13.
- 8 OVAL TREE ISLES. SEE DETAIL, SHEET 13, ILLUMINATION AND ELECTRICAL SHEETS.
- 9 CIP SEAT WALL WITH SOLID SKIRT SEAT TOP TYPE Δ - \Diamond WITH ACCENT LIGHTING. SEE DETAIL, SHEET 12, ILLUMINATION, STRUCTURAL AND ELECTRICAL SHEETS.
- 10 ENTRY COLUMN. SEE DETAIL, SHEET 15, ILLUMINATION, STRUCTURAL AND ELECTRICAL SHEETS.
- 11 CONCRETE PAVER. SEE DETAIL, SHEET 10.
- 12 TRASH RECEPTACLE. SEE DETAIL, SHEET 11.
- 13 STANCHION. SEE ARCHITECTURAL AND STRUCTURAL SHEETS.
- 14 COLORED CONCRETE BAND. SEE DETAIL, SHEET 10.
- 15 DOG BAG DISPENSER. SEE DETAIL, SHEET 11.
- 16 5' X 5' SCORED CEMENT CONCRETE PAVEMENT. SEE DETAIL, SHEET 10 AND GRADING, PLAN SHEETS.
- 17 PLANTING AREA. SEE LANDSCAPE SHEETS 23 & 24 & IRRIGATION 26 & 27.
- 18 2' X 2' SCORED CEMENT CONCRETE SIDEWALK. SEE DETAILS, SHEETS 8 AND 10.
- 19 CATENARY LIGHTING. SEE ILLUMINATION AND ELECTRICAL SHEETS.
- 20 LUMINAIRE & POLE. SEE ILLUMINATION AND ELECTRICAL SHEETS.
- 21 ELECTRICAL POWER BOLLARD. SEE DETAIL, SHEET 11, ILLUMINATION AND ELECTRICAL SHEETS.
- 22 PEANUTS PARK STATUE FOUNDATION. SEE DETAIL, SHEET 11, AND STRUCTURAL SHEETS.
- 23 DRINKING FOUNTAIN. SEE DETAIL, SHEET 16.
- 24 BIKE RACK. SEE DETAIL, SHEET 11.
- 25 DECORATIVE PRECAST PAVER. SEE DETAIL, SHEET 9.
- 26 SITE FURNITURE. SEE DETAIL, SHEET 11.
- 27 SPONSOR BRICKS. SEE DETAIL, SHEET 9.
- 28 COLORED CEMENT CONCRETE EDGE BAND. SEE DETAIL, SHEET 8.
- 29 PEANUTS PARK STATUE (TBD) AND FOUNDATION. SEE DETAIL, SHEET 11, AND STRUCTURAL SHEETS.
- 30 CEMENT CONCRETE SIDEWALK PER COP STD ST-4.
- 31 CEMENT CONCRETE DRIVEWAY ENTRANCE TYPE 2 PER WSDOT STD PLAN F-80.10-04.
- 32 ART SCULPTURE FOUNDATION. SEE DETAIL, SHEET 9, AND STRUCTURAL SHEETS.
- 33 SIGN TYPE 2. SEE ARCHITECTURAL SHEETS.

GENERAL NOTES

1. FOR SITE ELEMENT REFERENCE POINT SEE SITE LAYOUT PLAN SHEETS 6 & 7 AND CORRESPONDING DETAIL SHEET 9-16.
2. SEE ILLUMINATION SHEETS FOR LUMINAIRE & POLE STATION AND OFFSETS AND DETAIL, SHEET 29 & 31.

NO.	DATE	BY	APPR.	REVISIONS

Approved By		17138SITE01.dwg
ENGINEERING MANAGER	DATE	PN 4/2020
DESIGNED BY	DATE	PN 4/2020
PROJECT MANAGER	DATE	PN 4/2020
DRAWN BY	DATE	HW 4/2020
PROJECT ENGINEER	DATE	CHECKED BY 4/2020



KPG
Interdisciplinary Design
TACOMA
2502 Jefferson Ave
WA 98402
(253) 627 0720
www.kpg.com

**BID
DOCUMENT**



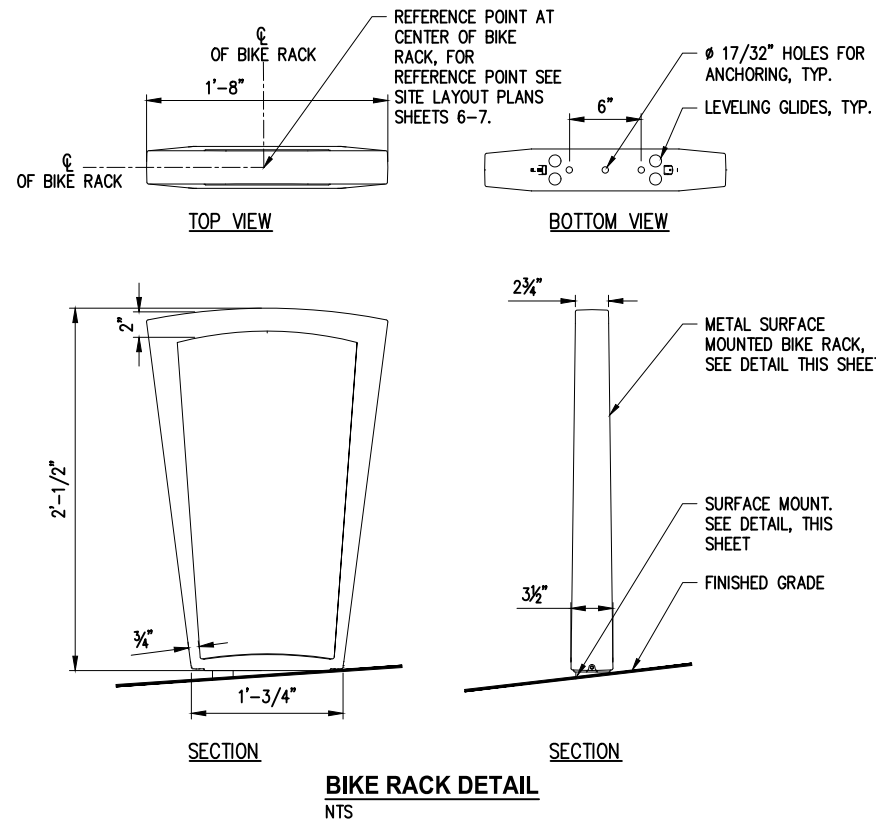
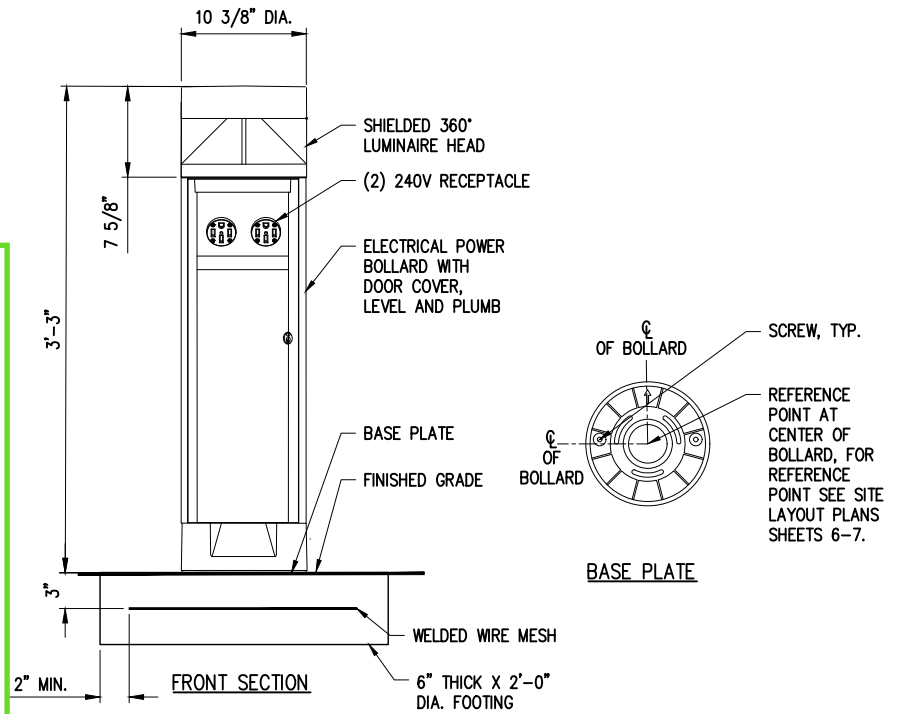
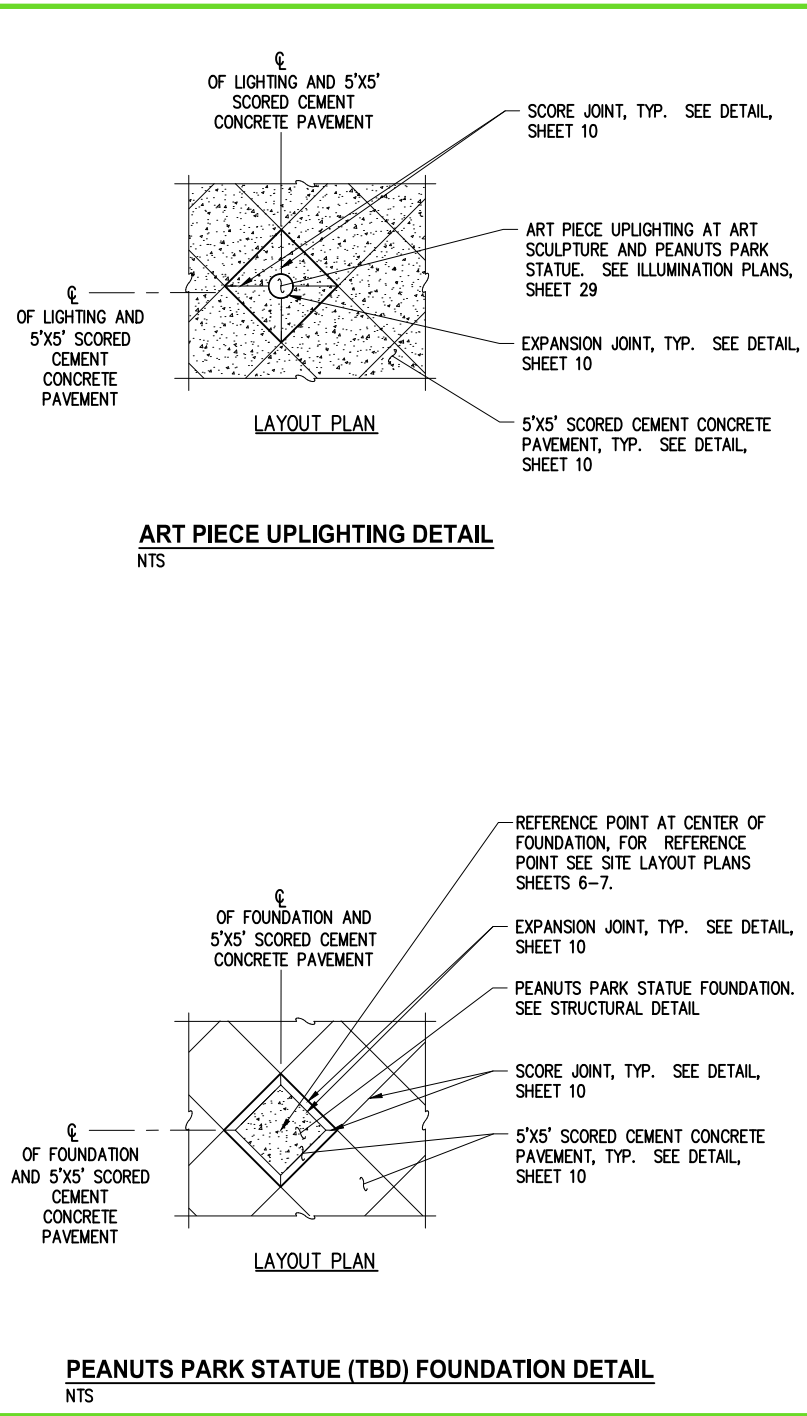
**CITY OF PASCO
PEANUTS PARK RESTORATION**

SITE ELEMENTS

KPG PROJECT No. 17138 SHT 5 OF 86

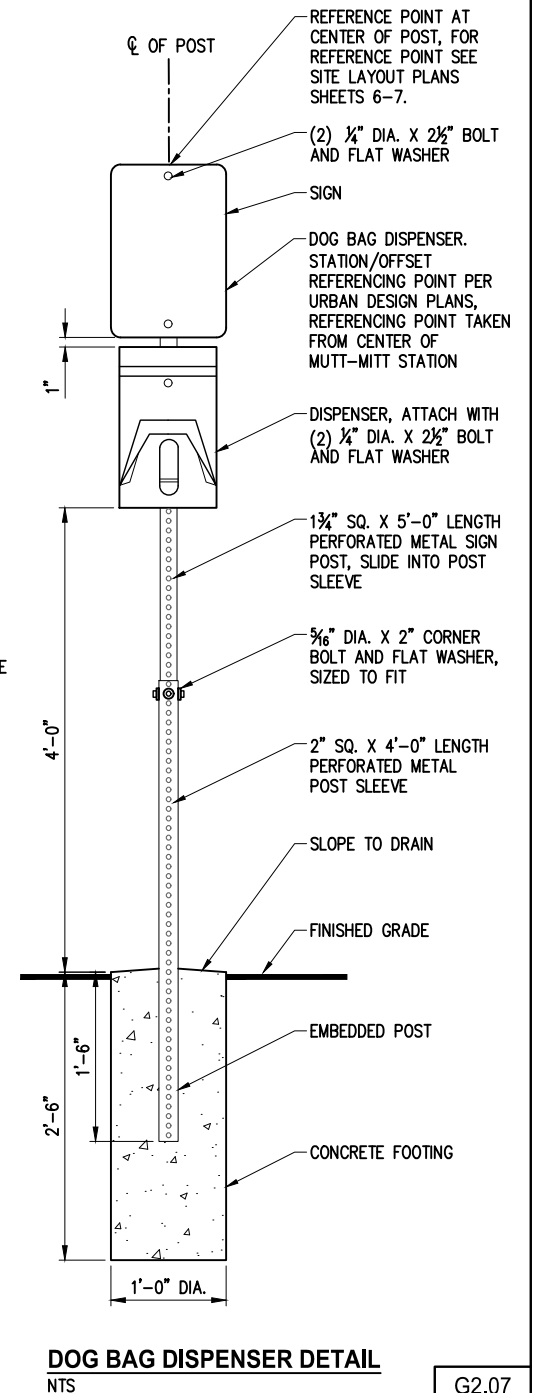
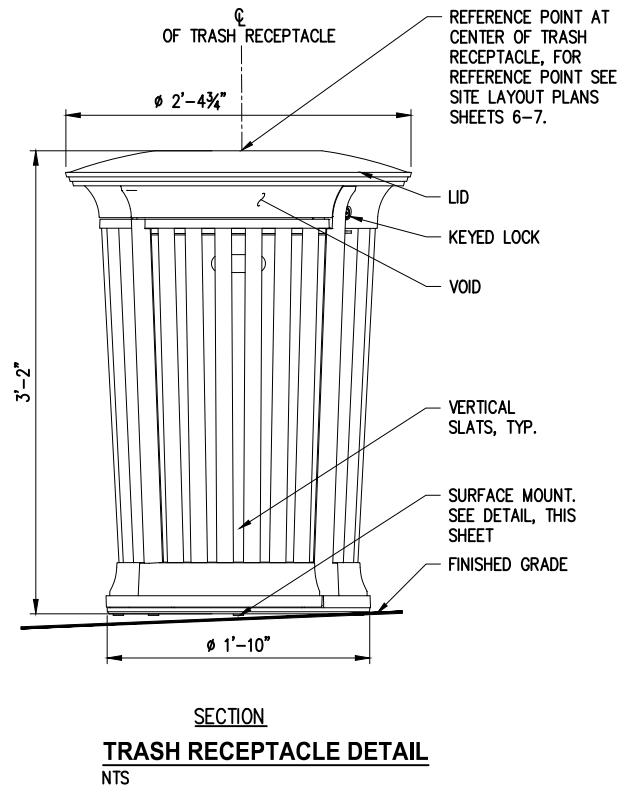
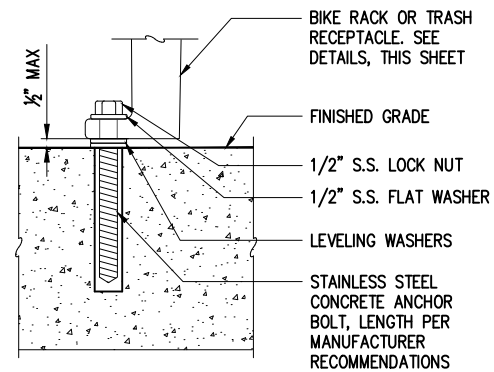
G2.01

K:\PROJECTS\PASCO\17138 - Peanuts Park Final Design\Drawings\Contract\17138URBDT01.dwg 5/6/2020 8:18 AM



NOTES:

1. INSTALL BIKE RACK AND TRASH RECEPTACLE LEVEL AND PLUMB.
2. ENGINEER TO FIELD VERIFY LOCATION AND ORIENTATION OF BIKE RACK AND TRASH RECEPTACLE PRIOR TO INSTALLATION.



NO.	DATE	BY	APPR.	REVISIONS

Approved By		17138URBDT01.dwg
ENGINEERING MANAGER	DATE	FILENAME
PROJECT MANAGER	DATE	PN
PROJECT ENGINEER	DATE	DESIGNED BY
		PN
		DRAWN BY
		HW
		CHECKED BY
		DATE



**BID
DOCUMENT**



**CITY OF PASCO
PEANUTS PARK RESTORATION**

SITE ELEMENT DETAILS

KPG PROJECT No. 17138 SHT 11 OF 86

G2.07